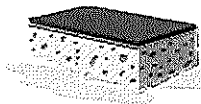


# A CITIZEN'S GUIDE TO BOAT & AUTO CAR

How we take care of our boats, personal watercrafts, mobile homes, cars and other vehicles greatly influences the health of the area lakes, rivers and streams. You can do your part to prevent pollution at the source by checking up on your marina and following a few simple tips.

## Car washing & boat cleaning



- Look for non-toxic and phosphate-free cleansers.
- Use alternative cleaners, such as baking soda and lemon juice. Avoid those with bleach, ammonia, lye or petroleum distillates (*see chart*).

<i>Product</i>	<i>Better Alternative</i>
Bleach	Borax or hydrogen peroxide
Chrome cleaner	Apple cider vinegar to clean, baby oil to polish
Drain cleaner	Boiling water and plunger or plumber's snake
Engine cleaner	Steam clean the engine in a dedicated service area.
Fiberglass stain remover	Baking soda paste, scrub pad, "elbow grease"
Paint stripper	Physically remove old paint without chemical use. Avoid products containing methylene chloride, trichloroethylene, benzene, trichloroethane, xylene or toluene.
Scouring powders	Baking soda and "elbow grease"
Window cleaner	Vinegar and lemon juice mixed in lukewarm water
Wood polish	Olive oil or almond oil for interior wood; use water- or borax-based products.

References: Marine Environmental Education Foundation's National Clean Boating Campaign 2000 Action Kit and Michigan Department of Environmental Quality's "Tips to Protect the Environment"

For more information, visit our website:

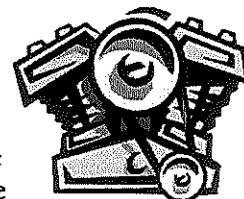
## Fuel and oil



- When fueling, avoid topping off! Remember that fuel expands as it warms up in your tank.
- Store fuel only in approved containers.
- Routinely check for and fix oil and fuel leaks.

## Engine care

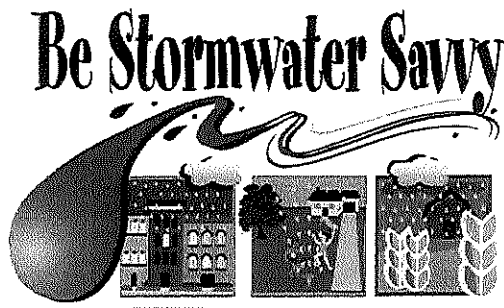
- Keep boat and car engines properly tuned for efficient fuel consumption and clean exhaust.
- Use a drip pan when doing engine maintenance. Drippings left on the cement get washed into nearby drains and end up in our streams.



## Sewage control

- Use onshore restrooms when docked, and encourage everyone to use the facilities before casting off.
- Empty portable toilets *only* at pumpout stations or at home.
- Clean up after your pet to prevent pet waste from washing into storm drains.

Many marinas statewide have pumpouts and allow non-members to use them. Keep sewage out of storm drains and lakes!

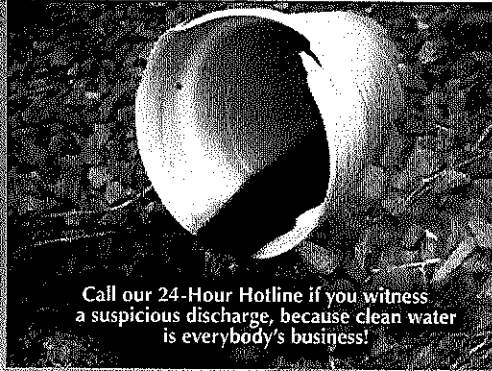


Don't let a good drop go bad!

## You make the difference.

Help protect our water for the next generation.

- **Properly dispose of household hazardous waste.**  
Never dump items such as motor oil, fuels, paints, cement, cleansers and pesticides on the ground or down the drain. These contaminate groundwater and surface waters. Instead, take them to the Kalamazoo County Household Hazardous Waste Center at 1301 Lamont St., Kalamazoo. Call 269-373-5211 for their hours of operation and other disposal advice.
- **Keep septic systems working properly.**  
Have septic systems checked every 2-3 years.
- **Check fuel storage tanks regularly for leaks.**  
Leaking aboveground and underground storage tanks are a major source of contamination. Check them!
- **Properly close abandoned wells.**  
Contract a driller to properly plug unused wells on your property. Unused wells transport contaminants directly to groundwater. We drink groundwater!
- **Wash cars away from storm drains.**  
When washing cars, direct wash water away from streets and storm drains. If possible, wash cars on the lawn so that water can be absorbed and filtered.
- **Dispose of pet waste.**  
Pet waste can be high in bacteria and nutrients, and should be disposed of in a toilet or trash can.
- **Compost grass clippings and leaves.**  
Direct your mower discharge away from the street so grass clippings and leaves never get into roadways.
- **Don't guess, soil test.**  
Over-applications of fertilizers and insecticides can make their way into both surface water and groundwater. Apply lawn chemicals only as needed. Phosphorus is banned unless a soil test indicates deficiency. Follow the directions on the container.
- **Landscape naturally.**  
Consider landscaping with plants native to the area. They are well suited to our climate, pest resistant, and can reduce the need for irrigation and fertilizer.
- **Properly dispose of swimming pool waste water.**  
Chemicals in pools and spas can be hazardous to local streams and lakes. 3-5 days after the last chemicals added, direct water to drain to a grassed area on your own property.



Call our 24-Hour Hotline if you witness a suspicious discharge, because clean water is everybody's business!

## 24-Hour Water Pollution

# HOTLINE

Because clean water is everybody's business!

## 269.381.3171

### Brought to you by the partnership of Kalamazoo Storm Water Work Group:

City of Kalamazoo  
City of Portage  
Kalamazoo County Road Commission  
Kalamazoo County  
Office of Drain Commissioner  
City of Galesburg  
City of Parchment  
Village of Vicksburg  
Western Michigan University  
Kalamazoo River Watershed Council  
Kalamazoo Public Schools  
Kalamazoo County  
Health and Community Services

For additional information,  
visit other water quality websites:

[www.kalamazooriver.org](http://www.kalamazooriver.org)  
<http://www.kalcounty.com/drain/education.htm>

Additional assistance for this brochure came from:  
Greater Battle Creek Area Watershed Management Committee  
Michigan Department of Environmental Quality  
Clean Michigan Initiative  
Barry-Eaton District Health Department  
Horry County, South Carolina

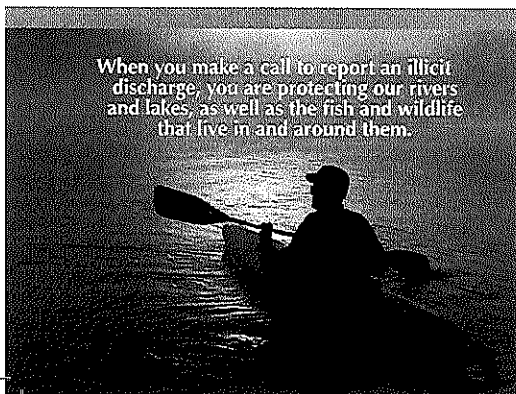
## Illicit Discharge Elimination Program



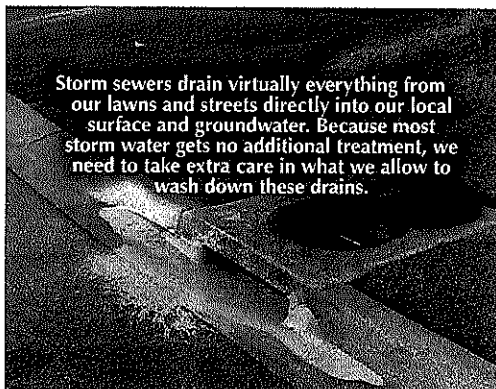
## Illicit discharge means pollution.

An illicit discharge is any discharge to the storm water drainage system that is not just rainwater. Some examples of illicit discharges include dumping of motor vehicle fluids; industrial, commercial or household hazardous wastes; direct connections between household plumbing and storm drains, failing septic fields; unauthorized discharges of sewage, industrial waste; restaurant waste; or anything else that is not rainwater. Grass clippings, leaf litter, animal waste and pool waste water are also sources of pollution.

When these illicit discharges reach rivers and lakes they impact the waterways we use for swimming, fishing and other recreational activities. Identification and elimination of illicit discharges is necessary to protect our water resources and prevent water-borne illnesses.



KcoWater IllicitDischargeBro19 FIN.indd 2



## What you can do.

Illicit discharges to water bodies such as streams, lakes and wetlands contribute to the degradation of the environment. Streams in Kalamazoo County flow to the Kalamazoo and St. Joseph Rivers, which eventually reach Lake Michigan. The Kalamazoo Storm Water Work Group is committed to protecting these valuable resources. However, we need your help to identify illicit discharges.

## 24-Hour Water Pollution HOTLINE

Because clean water is everybody's business!

# 269.381.3171

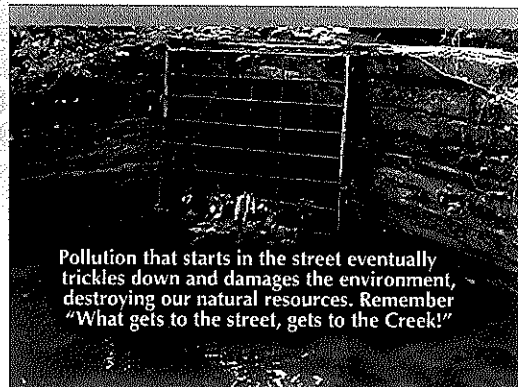
## What you can do.

### Please call our hotline if you observe:

- A strong or chemical odor near a storm water inlet or outfall.
- Discharges—someone dumping suspicious substances into drains or into a water body
- Sewage on the ground surface

### Be prepared to give the following information:

- Location of complaint
- Source of pollution, if known
- Responsible party, if known
- Any other relevant observations



4/11/13 11:01 AM